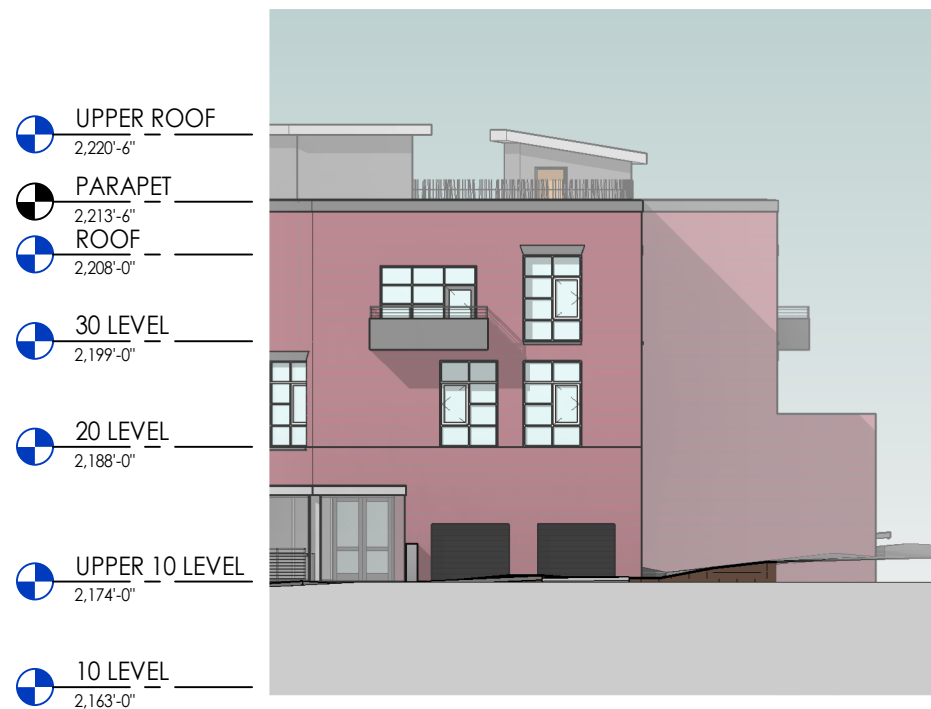




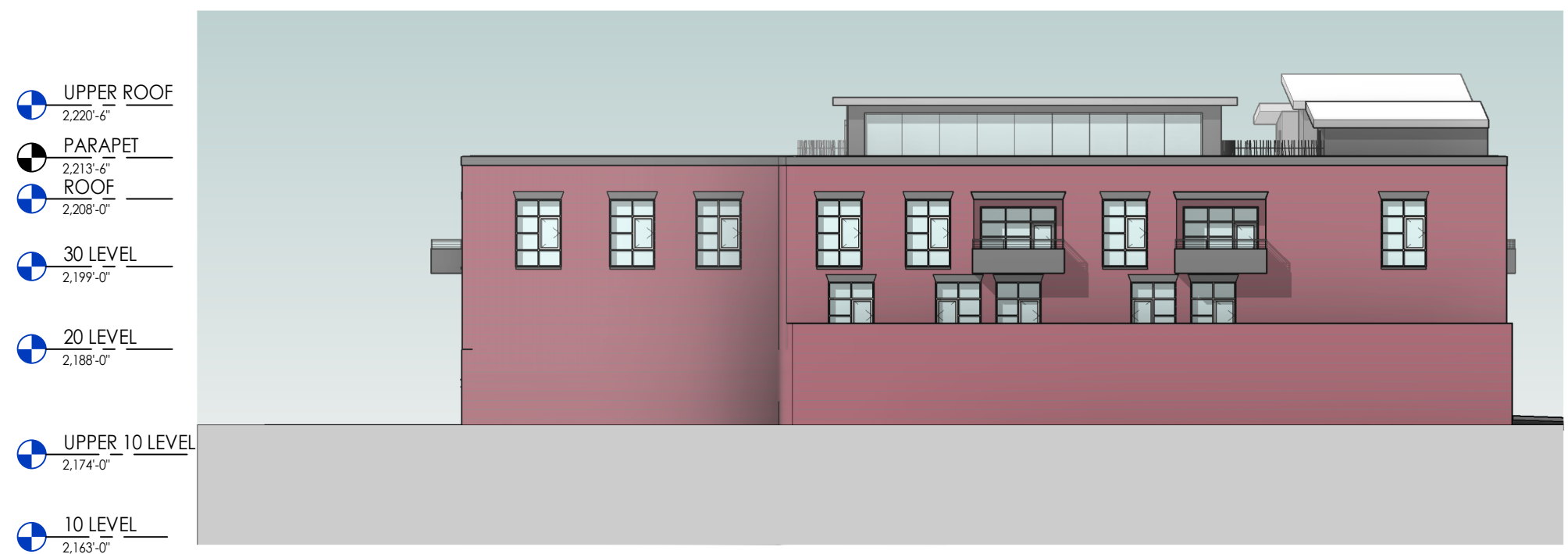
- UPPER ROOF
2,220'-6"
- PARAPET
2,213'-6"
- ROOF TERRACE
2,210'-0"
- 30 LEVEL
2,199'-0"
- 20 LEVEL
2,188'-0"
- UPPER 10 LEVEL
2,174'-0"
- 10 LEVEL
2,163'-0"

3 SOUTH EAST ELEVATION - MILLARD AVENUE
 1" = 20'-0"



- UPPER ROOF
2,220'-6"
- PARAPET
2,213'-6"
- ROOF
2,208'-0"
- 30 LEVEL
2,199'-0"
- 20 LEVEL
2,188'-0"
- UPPER 10 LEVEL
2,174'-0"
- 10 LEVEL
2,163'-0"

2 EAST ELEVATION - MILLARD AVENUE
 1" = 20'-0"



- UPPER ROOF
2,220'-6"
- PARAPET
2,213'-6"
- ROOF
2,208'-0"
- 30 LEVEL
2,199'-0"
- 20 LEVEL
2,188'-0"
- UPPER 10 LEVEL
2,174'-0"
- 10 LEVEL
2,163'-0"

1 NORTH ELEVATION - FACING BURIAL
 1" = 20'-0"

- UPPER ROOF
2,220'-6"
- PARAPET
2,213'-6"
- ROOF
2,208'-0"
- 30 LEVEL
2,199'-0"
- 20 LEVEL
2,188'-0"
- UPPER 10 LEVEL
2,174'-0"
- 10 LEVEL
2,163'-0"



2 WEST ELEVATION - COLLIER AVENUE
 1" = 20'-0"

- UPPER ROOF
2,220'-6"
- PARAPET
2,213'-6"
- ROOF
2,208'-0"
- 30 LEVEL
2,199'-0"
- 20 LEVEL
2,188'-0"
- UPPER 10 LEVEL
2,174'-0"
- 10 LEVEL
2,163'-0"



1 SOUTH WEST ELEVATION - CORNER
 1" = 20'-0"